



FAISAL ALMEHMADI COMPANY **for CONTRACTING**

COMPANY PROFILE



CEO STATEMENT

As CEO of Faisal Almhadi Company, I am proud to lead a team dedicated to excellence in transmission and distribution services. Our commitment to delivering exceptional results is unwavering, driven by a passion for innovation and a relentless pursuit of excellence. With a focus on safety, quality, and efficiency, we strive to exceed client expectations and set new standards in the industry.

At Faisal Almhadi Company, we understand the critical role that transmission and distribution play in powering our world. That's why we approach every project with the utmost care and attention to detail, ensuring that our solutions meet the highest standards of reliability and performance.





ABOUT US

At Faisal Almehmadi Company for Contracting, we specialize in delivering comprehensive solutions for Power Cable Projects across various voltage levels, with a particular focus on medium voltage up to 380kV. With our expertise in replacement of LPOF /XLPE Cable, Joints, and terminations, we offer end-to-end services encompassing Supply, Installation, Projects Supervision & Management, Testing, and Commissioning.

As a turnkey contractor, we take pride in our ability to handle all aspects of power cable projects seamlessly, ensuring efficiency and reliability from start to finish. Our installation team is certified from SEC approved OEMs like PFISTERER, LS, TAIHAN, BRUGG, NEXANS, etc . Our qualified & experienced jointers are dedicated to deliver superior results with a keen emphasis on quality and safety in power infrastructure in the Kingdom of Saudi Arabia.

QUALITY POLICY

Our Quality Policy for Engineering, Procurement, and Construction (EPC) and Lump sum turnkey (LSTK) projects in the power sector is founded on delivering superior performance across all stages of transmission & distribution related projects. From the initial design phase to commissioning and final handing over, we are committed to ensuring that each project meets the highest standards of quality, reliability, and efficiency. This policy emphasizes rigorous adherence to industry standards, meticulous attention to detail, and continuous improvement in all project phases. By adhering to these best industry practices, we aim to deliver projects that meet the highest standards of performance, reliability, and safety.



SAFETY POLICY

Safety is a paramount concern in EPC, LSTK, OPEX & CAPEX projects within the power sector, particularly when dealing with EHV/HV/MV projects. Our Safety Policy is designed to protect all personnel, contractors, and stakeholders involved in these projects, ensuring that all work is carried out in a safe and controlled environment. Our safety policy encompasses every aspect of the project, from design and procurement to construction and commissioning, with a focus on preventing accidents and ensuring compliance with all safety regulations. Through rigorous adherence to safety standards, comprehensive trainings, and proactive risk management, we aim to create a safer working environment that minimizes the risk of accidents and protects the health and well-being of everyone involved in our projects.



ENVIRONMENT POLICY

Our Environmental Policy for EPC projects in the power sector is driven by a commitment to sustainability and environmental stewardship. We recognize the environmental impact of transmission and distribution projects and strive to minimize this impact through careful planning, sustainable practices, and adherence to environmental regulations. This policy outlines our approach to protecting the environment while delivering critical EPC & LSTK projects. By integrating these principles into every phase of our projects, we aim to deliver infrastructure that supports the growth of the power sector while preserving the environment for us and our future generations.

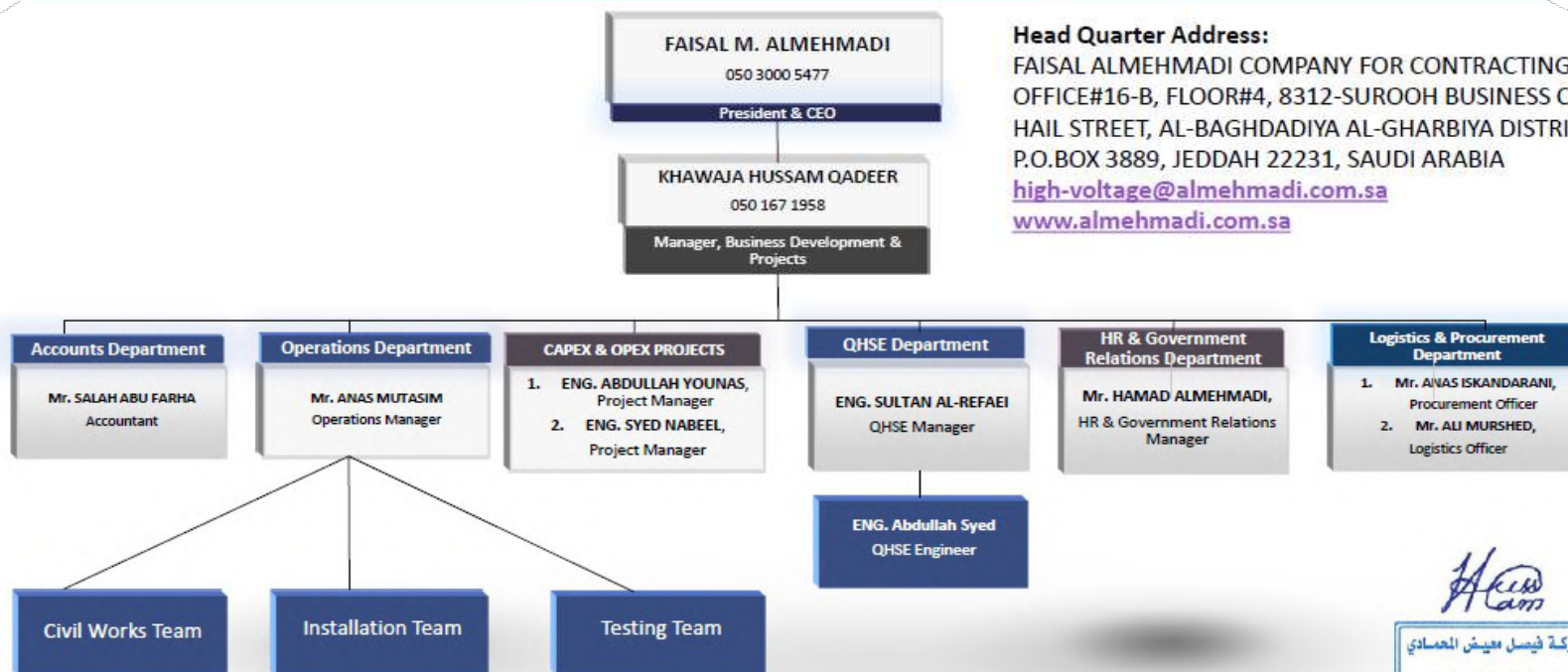




FAISAL ALMEHMADI COMPANY FOR CONTRACTING (FAMCC)



ORGANIZATION CHART





INTRODUCTION

Faisal Almhadi Company for Contracting is a distinguished contracting company with a rich 19-year legacy of delivering exceptional UGC related trading & services across various regions of the Kingdom of Saudi Arabia. Since our establishment in 2006, we have dedicated ourselves to earning a reputation as a dependable and proficient provider of high-quality transmission and distribution solutions.

AREA OF WORK (Transmission & Distribution)



1

**Survey, Design &
Engineering**

3

Civil Works

2

**Supply & Installation of
Materials/ Equipment**

4

**Testing &
Commissioning**



OUR EXPERTISE

- SUPPLY, INSTALLATION & COMMISSIONING OF GIS & TRANSFORMER SIDE CABLE TERMINATION
- SUPPLY, INSTALLATION & COMMISSIONING OF OUTDOOR TERMINATION
- SUPPLY, LAY & PULLING OF MV & HV CABLE
- HV CABLE JOINTS INSTALLATION WORK
- SUPPLY & INSTALLATION OF LINK BOX
- LOWERING OF TRANSFORMER OIL, FILTERATION & REFILLING
- SUPPLY & CABLE CLAMPS /CABLE TRAY INSTALLATION
- SUPPLY & PAINTING OF FR PAINT FOR CABLE
- SF6 GIS GASSING DEGASSING etc





OUR EXPERTISE

REMOVAL OF LPOF CABLE SYSTEM (TANKS, PIPES, GAUGES ETC) AS DIRECTED

HV & ELECTRICAL TESTS FOR HV POWER CABLE

OPEN AND CLOSE & INSTALLATION OF CONCRETE MANHOLE COVER OF LINK BOX FOR INSPECTION / MAINTENANCE

MODIFICATION OF (ADAPTER, LINK, TAKE OFF BOLT CORONA etc) FOR TRANSFORMER OR GIS

SUPPLY & INSTALLATION CABLE SUPPORT AND ITS ACCESSORIES ON SMALL BRIDGES

TRANSFER CABLE DRUM FROM COMPANY WAREHOUSE TO SITE AS DIRECTED

SUPPLY OF FIRE-RETARDANT MATERIAL AND SEALING OF ALL CABLE OPENINGS IN FLOOR/WALL WITH FIRE RETARDANT MATERIALS

SUPPLY & INSTALLATION OF ADAPTER/CONNECTOR FOR OHL TO CABLE FOR TERMINATION

INSTALLATION OF CABLE TERMINATION FOR MV XLPE CABLES UP TO 34.5 KV OF ANY SIZE

INSTALLATION OF CABLE TERMINATION FOR MV XLPE CABLES UP TO 34.5 KV OF ANY SIZE

DISMANTLE / REMOVAL OF HV & MV CABLE TERMINATION OF ANY SIZE

LAY/PULL UPTO 380 KV CABLE OF ANY SIZE IN SUBSTATION BASEMENT/DUCT BANK/CONDUITS DIRECTLY BURIED

SUPPLY OF FIRE-RETARDANT MATERIAL AND SEALING OF ALL CABLE OPENINGS IN FLOOR/WALL WITH FIRE RETARDANT MATERIALS

INSTALLATION OF CABLE CLAMPS OF MV & HV CABLES

SUPPLY AND INSTALLATION OF CONCRETE BARRIERS

EXCAVATE IN ROCKY/ NON ROCKY SOIL AS PER THE DIMENSIONS DIRECTED

SUPPLYING AND SPREADING SUB-BASE & FINE SAND UNDER AND OVER INSTALLED CABLES

SUPPLYING AND INSTALLING TILES OVER THE SANDY LAYER OVER THE CABLE

SUPPLYING AND INSTALLING WARNING TAPE & WIRE MESH

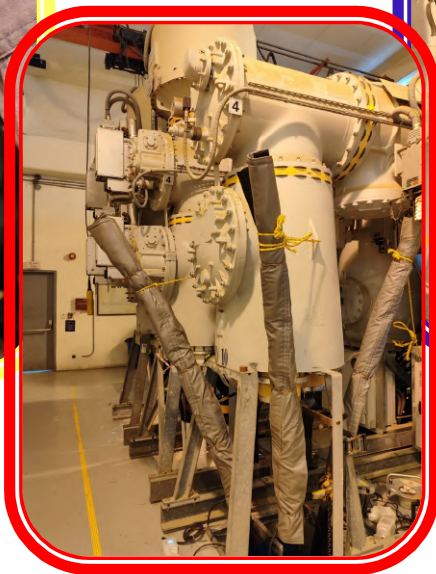
DEMOLISHING AND REMOVING CONCRETE (PLAIN AND REINFORCED)

SHIFTING, REPLACEMENT OR REPAIRING OF DAMAGED LINKBOX MANHOLE



SUPPLY & INSTALLATION OF TERMINATION & JOINTS etc

INSTALLATION OF INDOOR TERMINATION FOR 132 KV, XLPE CABLE OF ANY SIZE



**LAY/PULL CABLE UPTO 380 KV OF ANY SIZE IN SUBSTATION
BASEMENT/ DUCT BANK/ CONDUITS DIRECTLY BURIED**



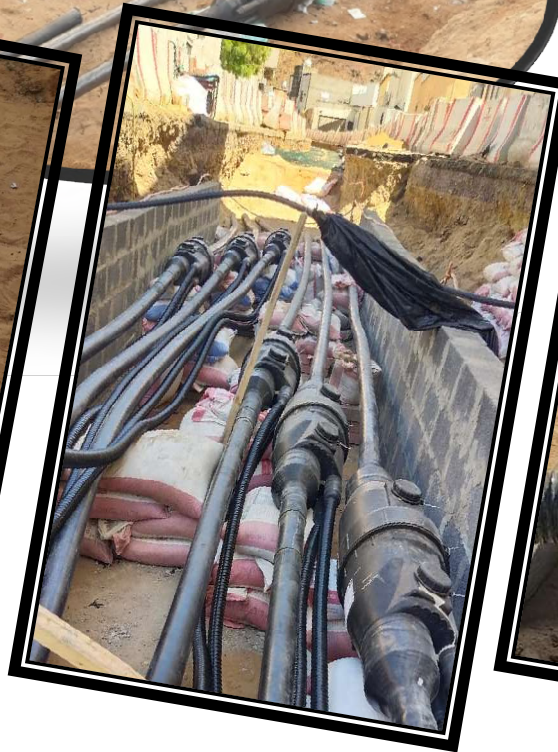
INSTALLATION OF BRUGG TERMINATION & JOINTS
AT SANABEL S/S TO MOBILE SOURCE



INSTALLATION OF CABLE JOINT FOR 132 KV CABLE OF ANY SIZE









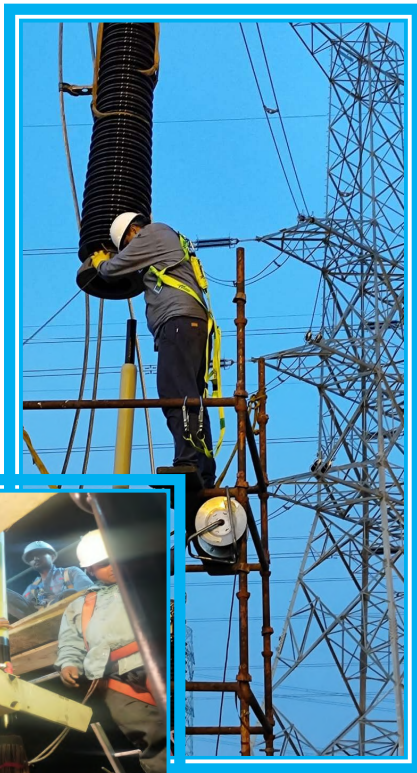
INSTALLATION OF 630mm² 110KV CABLE BRUGG TERMINATION IN ONE OF SUBSTATION AT JEDDAH



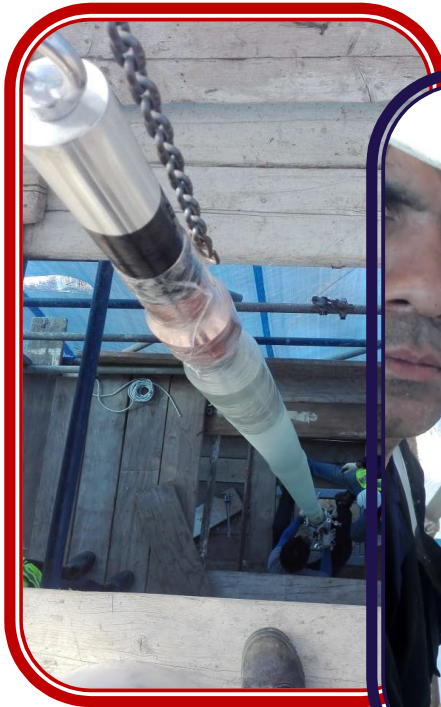
380KV 2500mm² LS OUTDOOR CABLE TERMINATION AT AL-SHUQAIQ



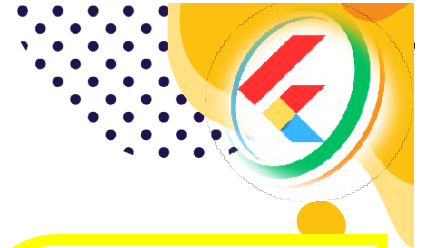
INSTALLATION OF PFISTERER ODSE TERMINATION IN JEDDAH



OUTDOOR 380KV 2500mm² CABLE TERMINATION (LS Cable) AT AL-SHUQAIQ



1200mm² 110KV ODSE PFISTERER TERMINATION & CONNECTOR
INSTALLATION IN MADINAH



SUPPLY & INSTALLATION OF ADAPTER/CONNECTOR OHL TO 1200mm²
CABLE FOR PFISTERER TERMINATION IN MADINAH GANTRY
AIRPORT PROJECT



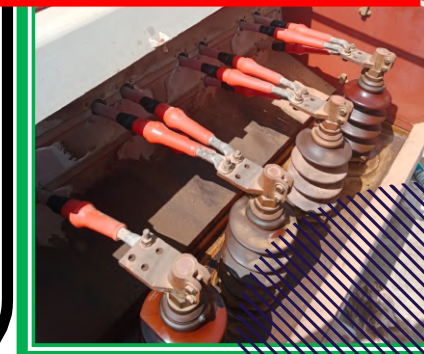
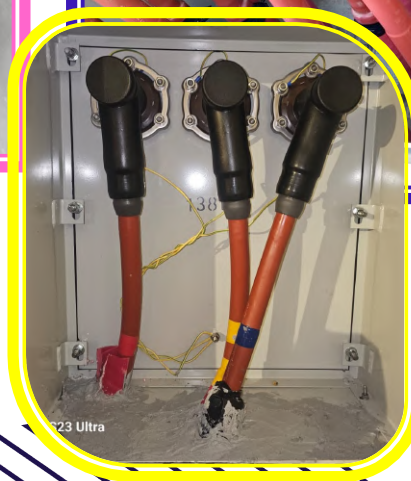
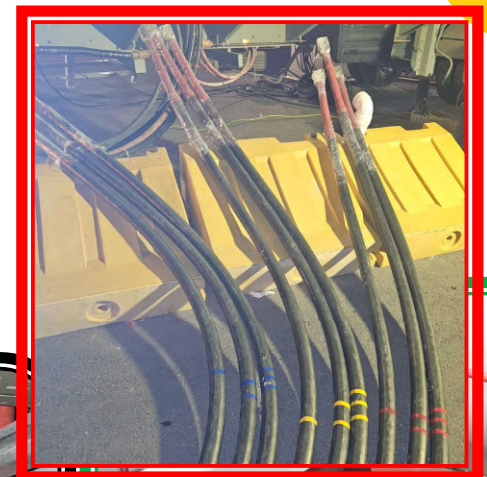
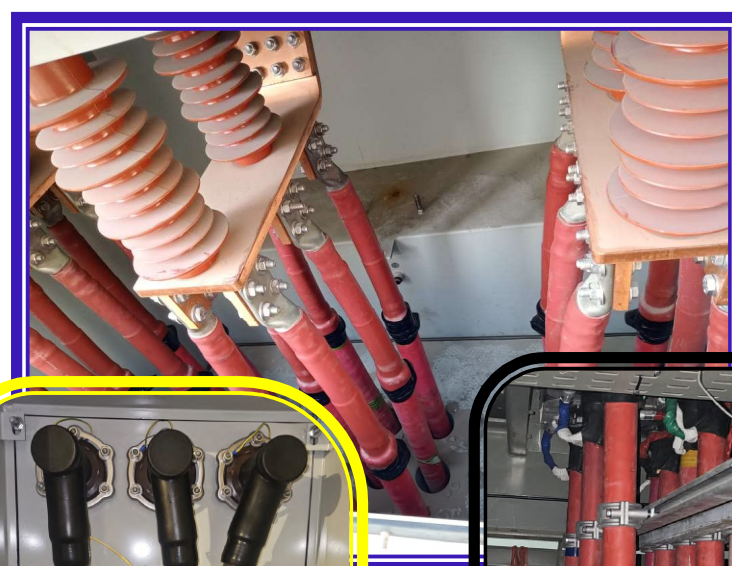
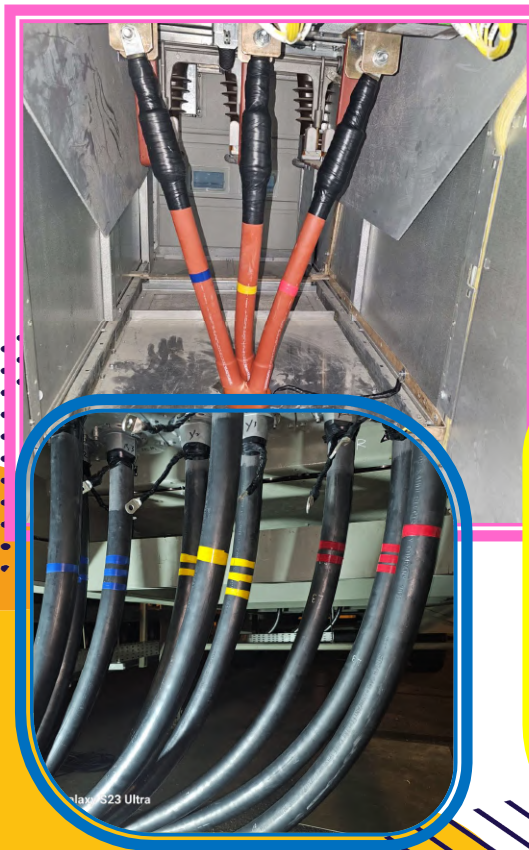


MISCELLANEOUS (Transmission & Distribution) WORK

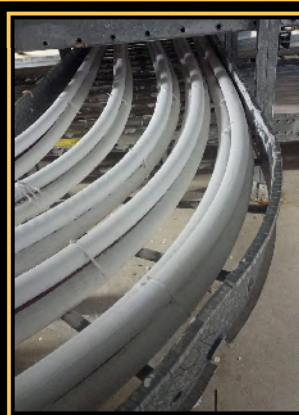
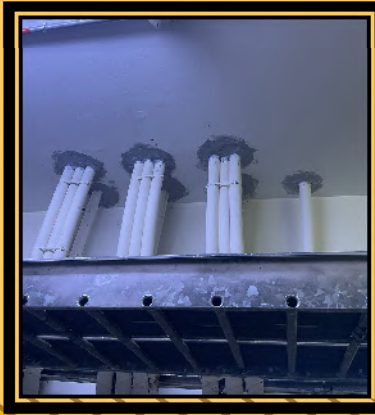
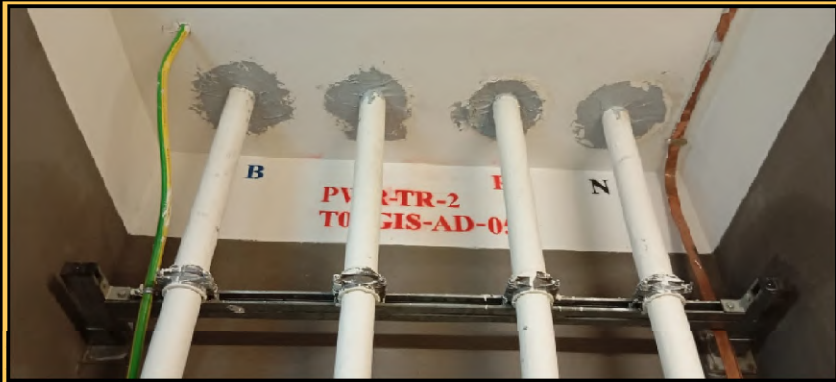
LAY/PULL MV CABLE UP TO 34.5 KV OF ANY SIZE



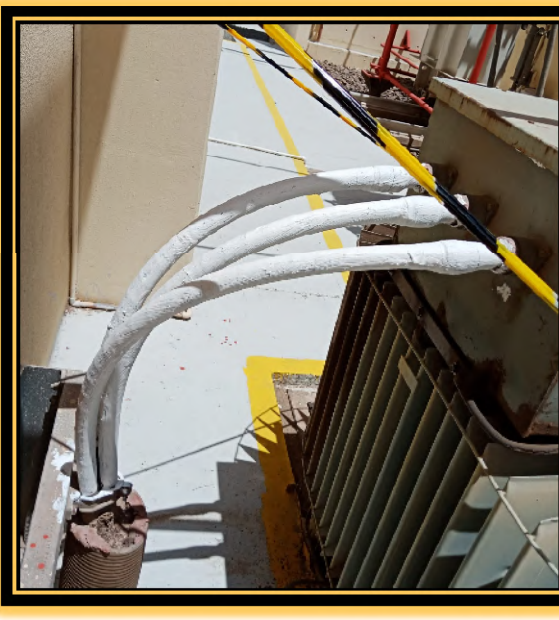
INSTALLATION OF CABLE TERMINATION FOR MV XLPE CABLES UP TO 34.5 KV OF ANY SIZE



SUPPLY REQUIRED FIRE-RETARDANT PAINT AND COATING MV POWER CABLES IN SUBSTATION



SUPPLY REQUIRED FIRE-RETARDANT PAINT AND COATING
MV POWER CABLES IN SUBSTATION



DISMANTLE / REMOVAL OF HV & MV CABLE & TERMINATION OF ANY SIZE



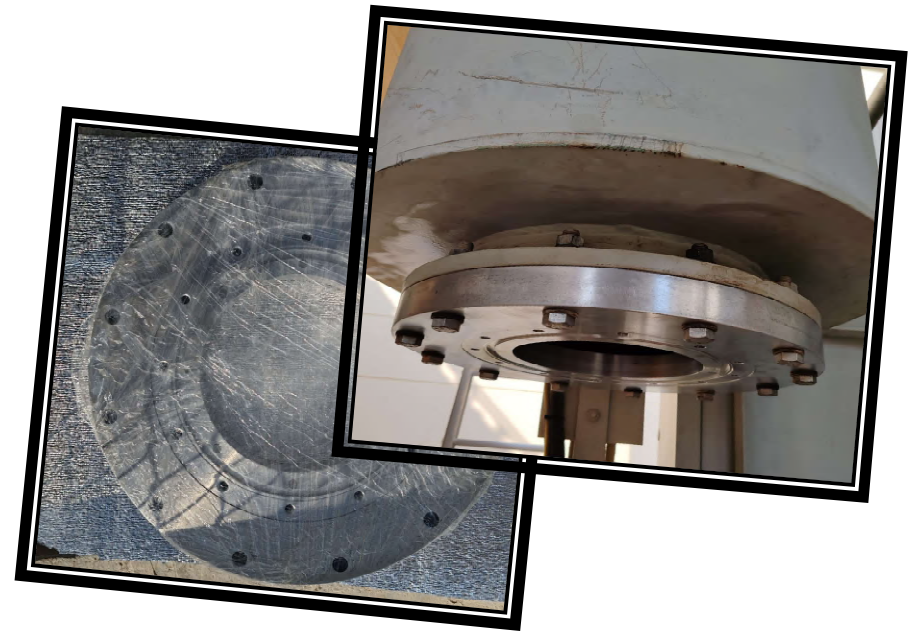
INSTALLATION OF NEW TAKE OFF BOLT & FLANGE ON TRANSFORMER CABLE COMPARTMENT



MODIFIED TAKE OFF BOLT



MODIFIED FLANGE



MODIFICATION WORK CORONA SHIELD FOR TRANSFORMER CABLE BOX

OLD CORONA



MODIFIED CORONA



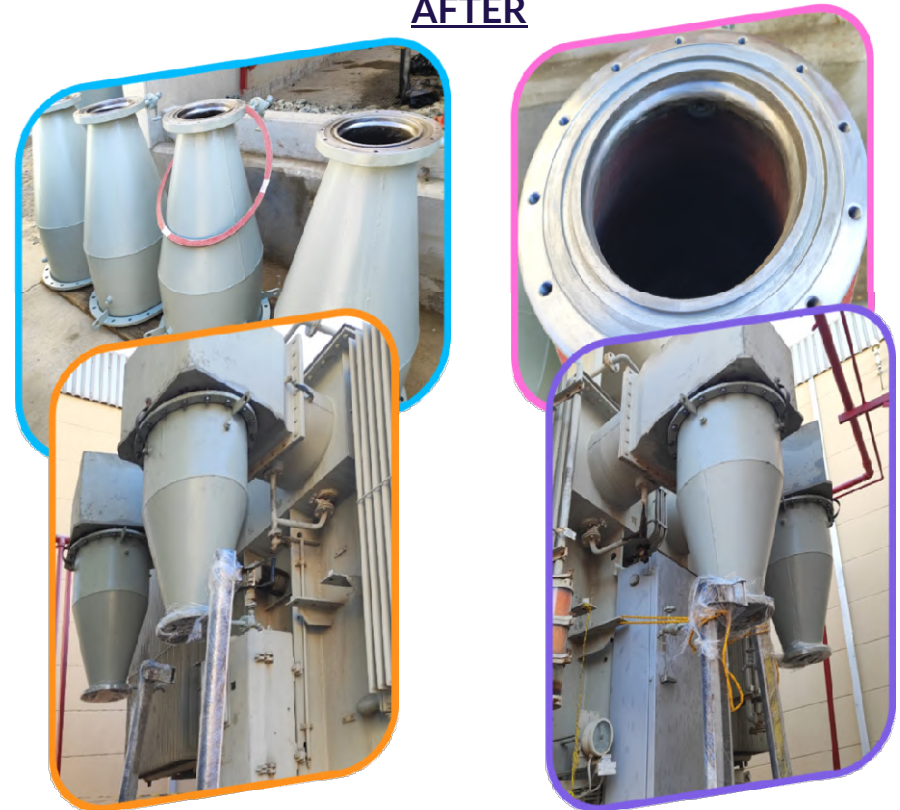
**MODIFICATION WORK ON TRAFU UNION TRANSFORMER
CABLE BOX AT TTC SUBSTATION JEDDAH.**



BEFORE



AFTER



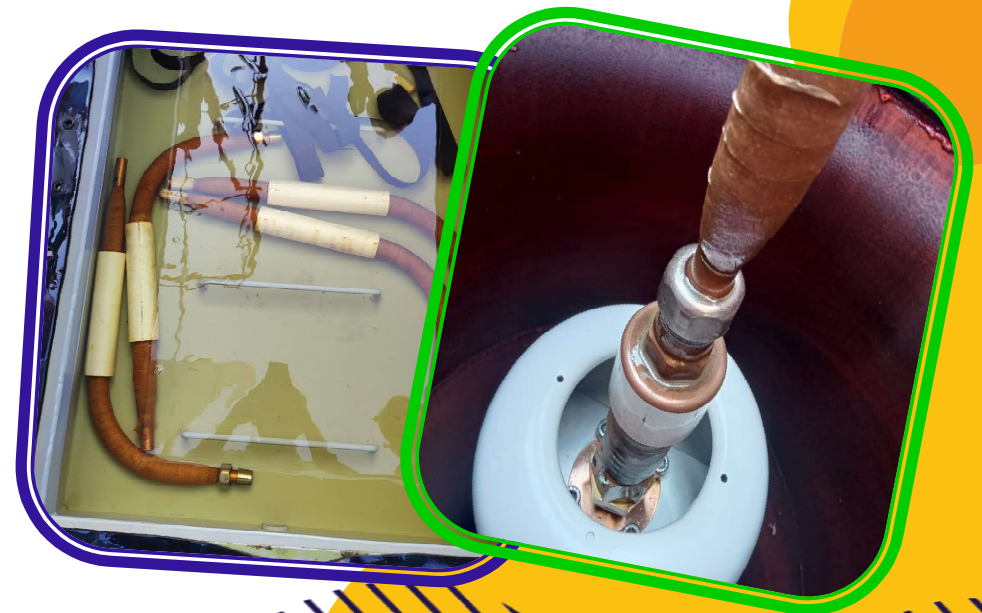
RE-WRAPPING OF TRANSFORMER LINK WITH OIL IMPREGNATED PAPER



BEFORE



AFTER



MODIFICATION WORK FOR GIS TAKE OFF BOLT IN ONE OF MADINAH SUBSTATION



OLD TAKE OFF BOLT



MODIFIED TAKE OFF BOLT NEW TERMINATION



SUPPLY & INSTALLATION OF LINK BOX WITH & WITHOUT SVL OF ANY TYPE



3/1 LINK BOX WITHOUT SVL



6/1 SPECIAL LINK BOX WITH SVL



3/1 LINK BOX WITH SVL



SHIFTING, REPLACEMENT OR REPAIRING OF DAMAGED LINKBOX MANHOLE



OLD



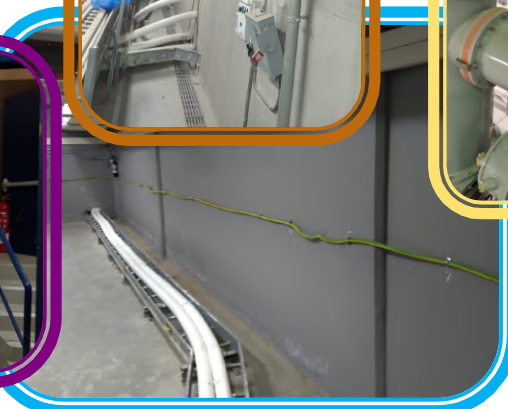
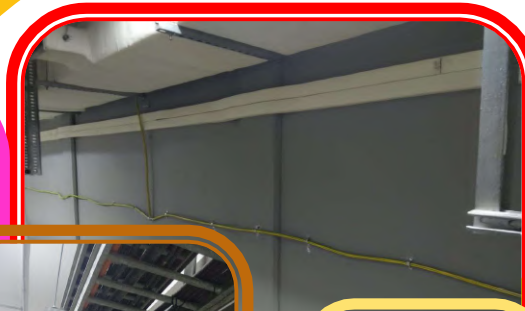
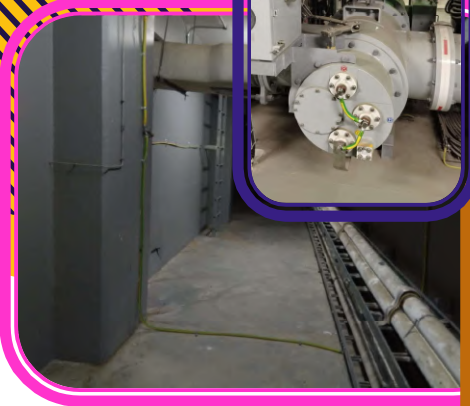
NEW (REPAIRED)



OPEN AND CLOSE & INSTALLATION OF CONCRETE MANHOLE COVER
OF LINK BOX FOR INSPECTION / MAINTENANCE



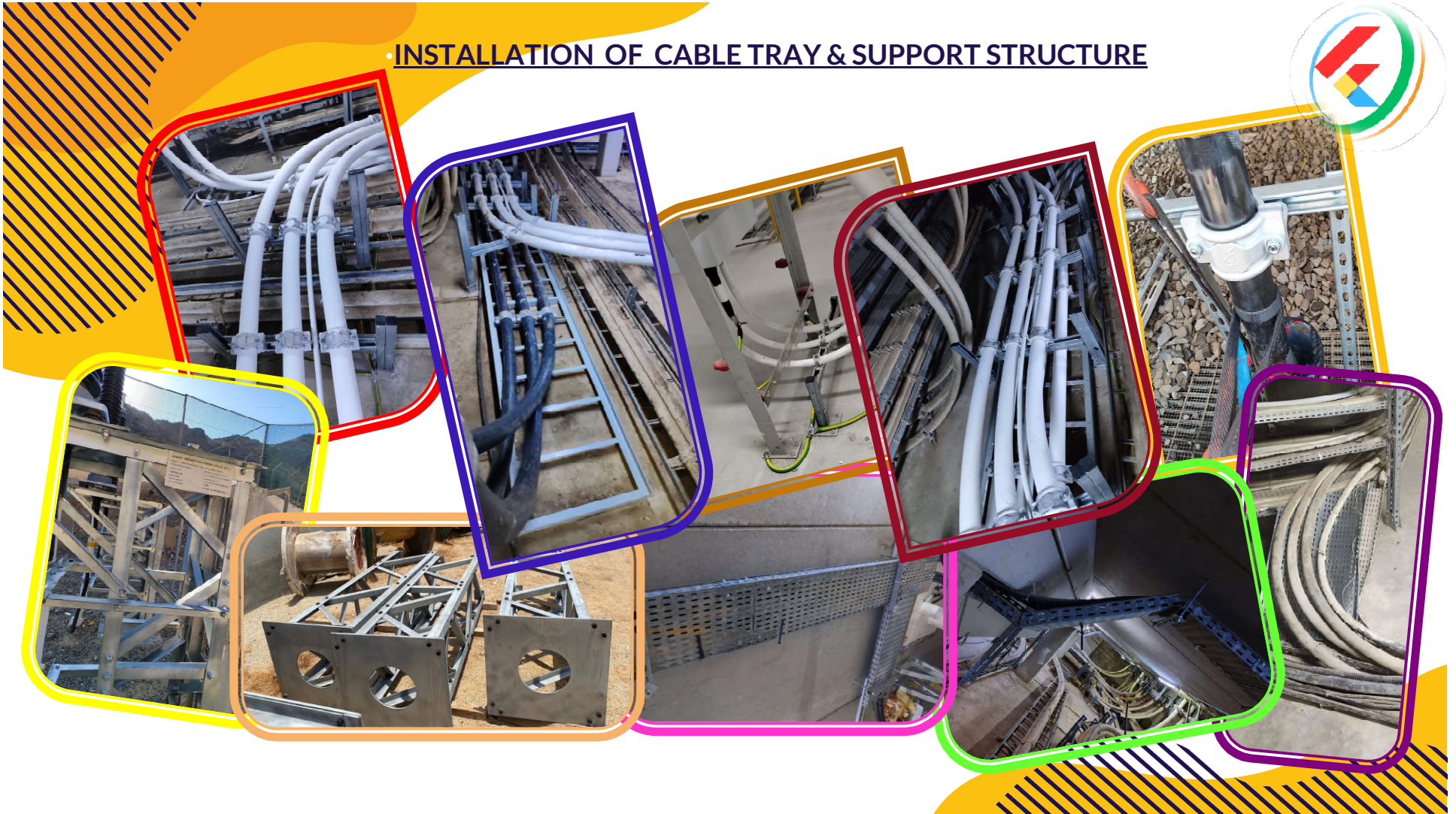
SUPPLY AND LAY BONDING & GROUNDING CABLE



SHIFTING SCRAP CABLE & TERMINATION TO SEC WAREHOUSE



INSTALLATION OF CABLE TRAY & SUPPORT STRUCTURE



INSTALLATION OF CABLE CLAMPS OF HV CABLES



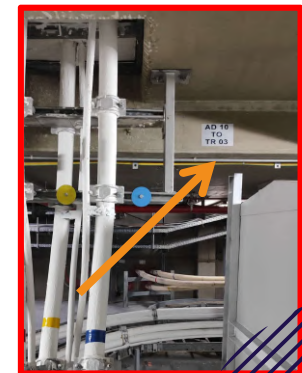
SUPPLY & INSTALLATION CABLE SUPPORT AND ITS ACCESSORIES ON SMALL BRIDGES



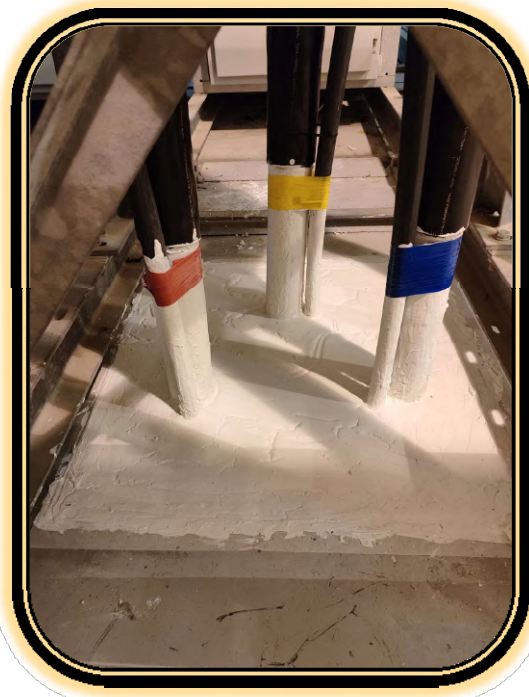
TRANSFER CABLE DRUM FROM COMPANY WAREHOUSE TO SITE AS DIRECTED



INSTALLATION OF NAME PLATE FOR THE CIRCUIT AS DIRECTED



SUPPLY OF FIRE-RETARDANT MATERIAL AND SEALING OF ALL CABLE OPENINGS IN FLOOR/WALL WITH FIRE RETARDANT MATERIALS



SUPPLY REQUIRED FIRE-RETARDANT PAINT AND COATING
HV POWER CABLES IN SUBSTATION



REMOVAL OF LPOF CABLE SYSTEM (TANKS, PIPES, GAUGES ETC) AS DIRECTED





TESTING & COMMISSIONING

HV & ELECTRICAL TESTING



HV & ELECTRICAL TESTS FOR HV POWER CABLE

- High Voltage Test For Cable
- Partial Discharge Test
- Conductor Continuity & Phasing Test
- DC Sheath Test(Cable Jacket Test)
- SVL Insulation Resistance Test
- Shield DC Resistance Test
- Conductor DC Resistance Test
- Link Box Ground Resistance Test
- Link Box Contact Resistance Test
- Cable Insulation Resistance Test etc

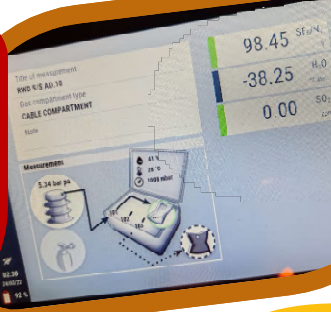






SF6 GIS GASSING AND DEGASSING FILLING/TESTING WORK

Our skilled & qualified team of experienced professionals is dedicated for GIS Compartment gassing & degassing using calibrated tools and equipments(Dilo Machine, SF6 Gas Analyzer, Gas detectors etc) to ensuring zero Gas Emission for environmental safety , strengthening of the greenhouse effect and therefore to a harmful global warming.





TRANSFORMERS OIL LOWERING AND REFILLING & TESTING WORK

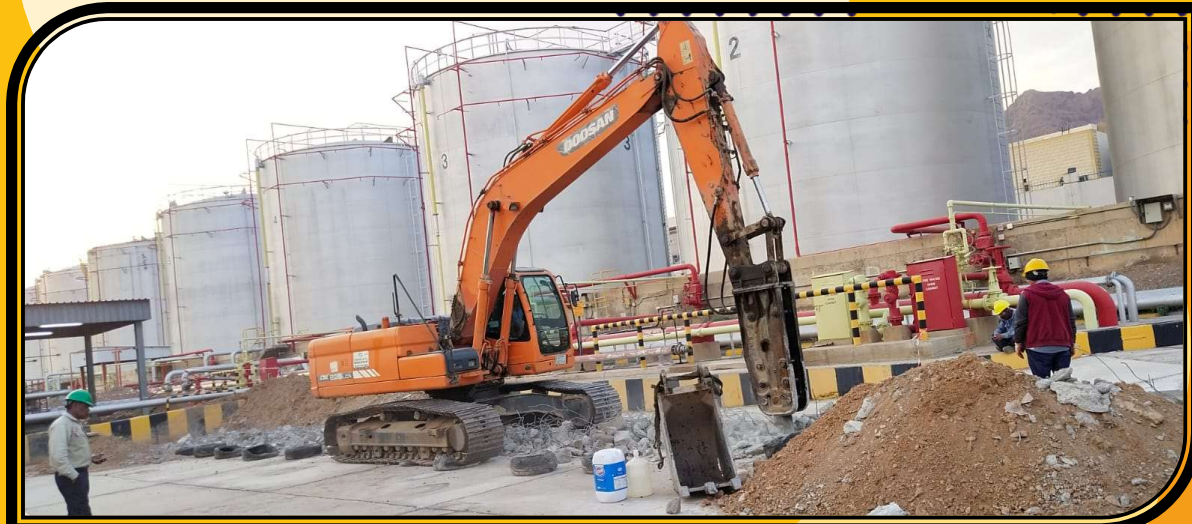
We have qualified team for following Transformer Oil activities:

- Transformer Oil Sampling
- Transformer Oil Testing(DGA, BDV, Water Content)
- Transformer Oil Drainage
- Vacuuming ,Circulation and refilling of oil as per SEC Standards & procedure





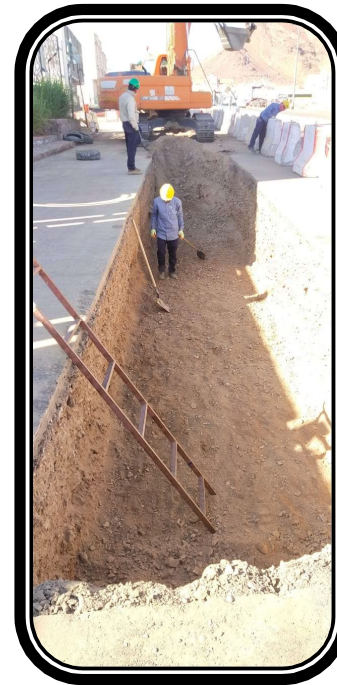
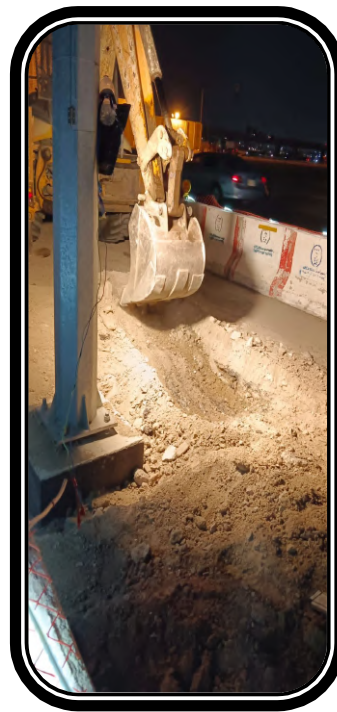
CIVIL SERVICES



EXCAVATION & BACKFILLING

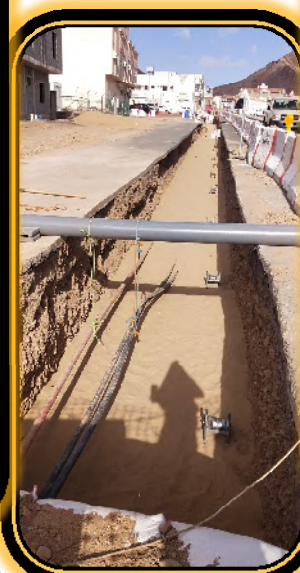


EXCAVATE IN A ROCKY OR NON ROCKY SOIL AS PER THE DIMENSIONS





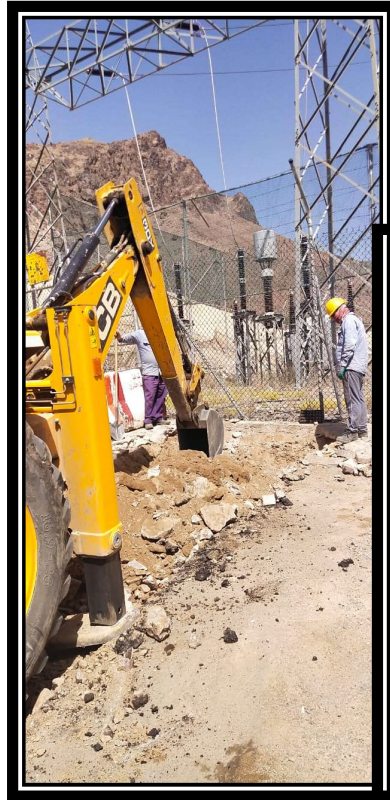
EXCAVATE IN A ROCKY OR NON ROCKY SOIL AS PER THE DIMENSIONS



SUPPLY AND INSTALLATION OF CONCRETE BARRIERS



CUTTING AND REMOVING ASPHALT



PREPARATION OF EXCAVATION SITE AS DIRECTED



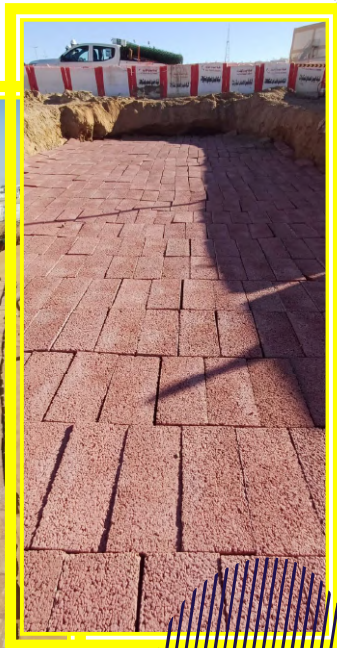
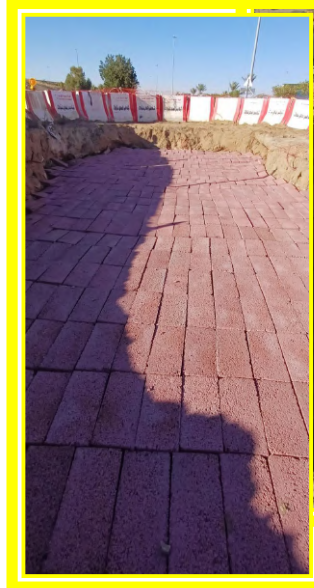
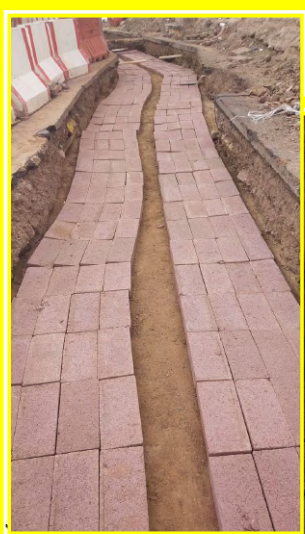
SUPPLYING AND SPREADING SUB-BASE & FINE SAND
UNDER AND OVER INSTALLED CABLES



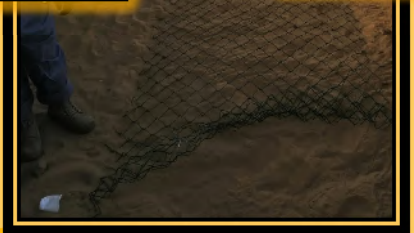
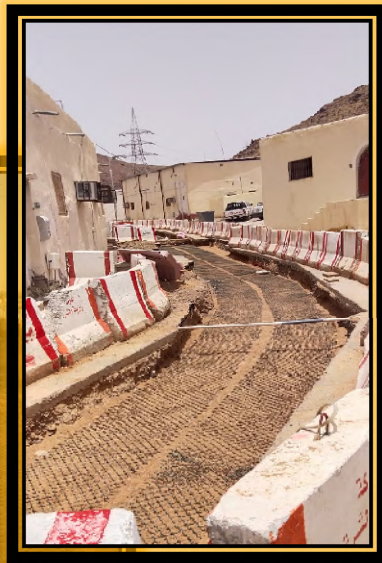
SUPPLYING AND SPREADING SUB-BASE & FINE SAND UNDER AND OVER INSTALLED CABLES



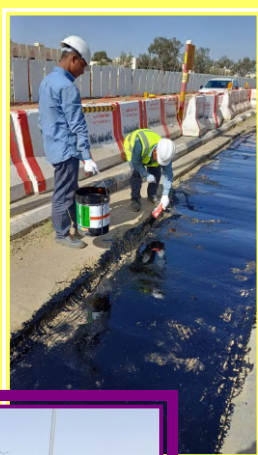
SUPPLYING AND INSTALLING TILES OVER THE SANDY LAYER OVER THE CABLE



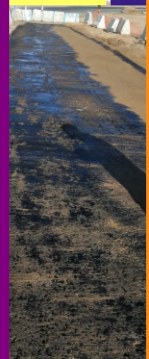
SUPPLYING AND INSTALLING WARNING TAPE & WIRE MESH



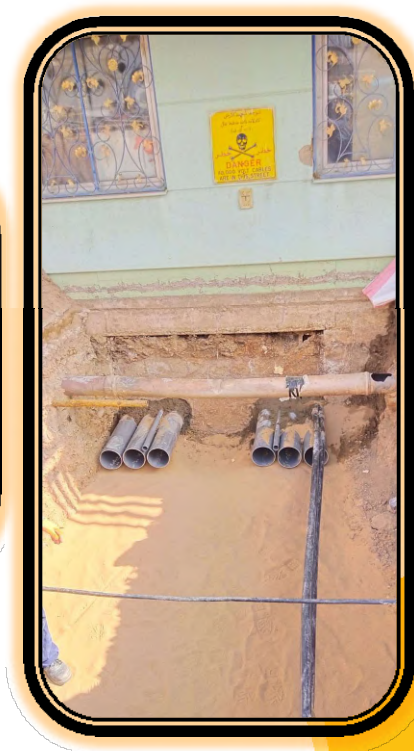
SUPPLYING AND INSTALLING ASPHALT PER MOC (MINISTRY OF COMMUNICATIONS), MOT (MINISTRY OF TRANSPORTATION) AND MUNICIPALITY SPECIFICATIONS



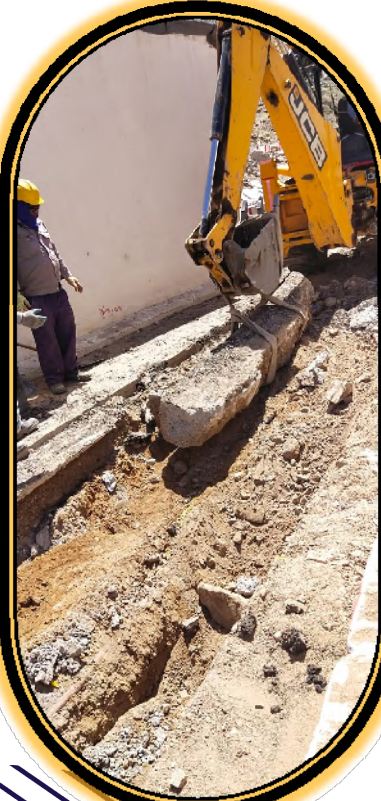
RC2



SUPPLYING AND INSTALLING 6 / 4 INCH PVC/STEEL CONDUITS



DEMOLISHING AND REMOVING CONCRETE (PLAIN AND REINFORCED)

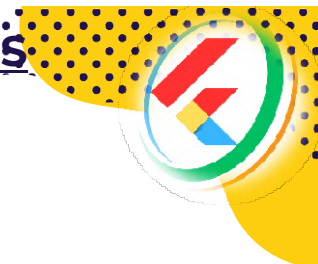


LIST OF UNDERGROUND CABLE 380-110-132kV-13.8kV PROJECTS

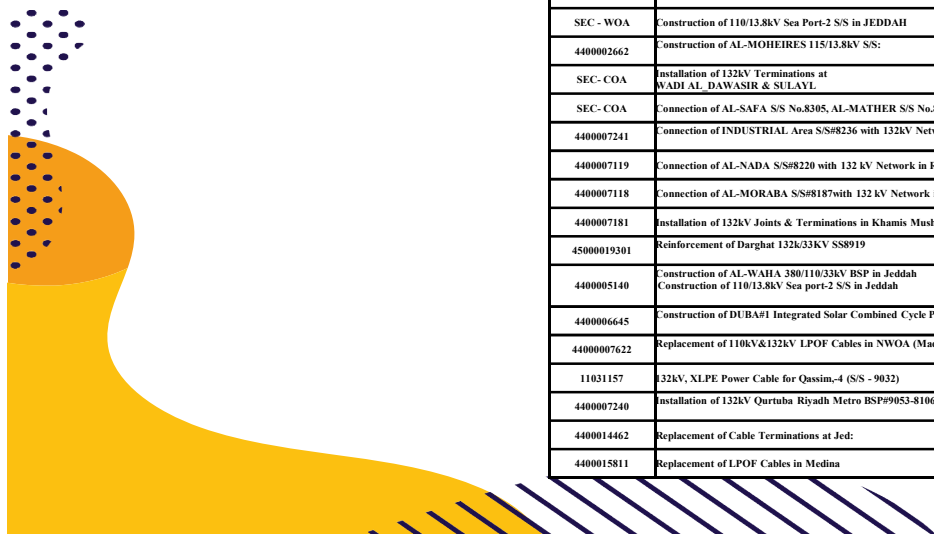


Contract No.	Project/Contract Title and Brief Description of Work	Value (Saudi Riyals)	Contract No.	Project/Contract Title and Brief Description of Work	Value (Saudi Riyals)
4800002638	380kV UG Cable between 9001 & 9024 BSPS & 132kV UG Cable between 9024 & 8183 - 8184 S/S:	255,000.00	(KIC) BSP#9067	Construction of Al-Kharj Industrial City (KIC) BSP#9067 (380kV)	36,000.00
4800002245	Yanbu-3 380kV S/S & Power Supply to Pumping Stations of Yanbu - Madinah Water Transmission System (Phase-III):	605,000.00	4400004110	Construction of New MADINAH CENTRAL 380/ 110/ 13.8 kV BSP & Expansion of WADI FARA 380kV BSP	103,500.00
4800001624	Construction of UMLUJ NORTH 380/33/13.8kV BSP	678,000.00	21203043/00	Construction of New 110/ 13.8 kV AL-KHANDIQ SUBSTATION	252,000.00
4800010941	Installation of GIS & Transformer SE at RAFHA S/S	63,500.00	31131169/00	Construction of Al Omran 380/115/13.8kV BSP	211,000.00
4400000873	Construction of New 380/132/13.8kV S/S Wadi BSP	270,000.00	31121090/00	Construction of Sharoura PP	15,000.00
4800004859	Construction of New 132/13.8kV S/S#8054 in Royal Guards Training Center in Thumamah Area	111,000.00	21021018/00	TAIF S/S Project Site	117,000.00
4800006588	Construction of New PP-7 380/132kV BSP & Expansion of S/S#9027	946,650.00	131010129001	TABARJAL S/S Site Termination Work	176,500.00
4800005896	Connection of Umm Ul Hamam S/S#8175 with 132kV Network, 132kV Network Connections for PP-7 BSP S/S#9007 in Riyadh:	750,000.00	31031066/00	Installation of 115kV U/G Cables to Al-Khur, Al-Murjan & Jubail-6 S/S	430,200.00
4800007012	Construction of Al-Khafji 380/115/13.8 kV BSP	745,200.00	4400001667/00	NADA 115/13.8kV S/S in Al-Hassa (U/G Cable Portion)	876,000.00
4500023798	132 kV U/G Power & Fiber Optic Cables Installation between Jizan CPS-1 132kV & Jizan University 132/13.8 kV	24,000.00	4400001880/00	NADA 115/13.8kV S/S in Al-Hassa (U/G Cable Portion)	891,000.00
4400005459	Integration of 132kV Network to JIZAN BSP (MADAYA in SOA)-S/S	81,000.00	AI JOUF	Installation of 132kV Joints & Terminations in AI JOUF	108,000.00
4800010005	Installation of 110 kV Power Cable Terminations in RABIGH	72,000.00	Military Industries in AL-KHARJ	Construction of 132/ 33/ 13.8kV S/S#8716 for Military Industries in AL-KHARJ Area:	1,230,000.00
48000003625	Installation of 132kV UG Cable, PNU S/S	37,500.00	11301002/00	Connection of King Fahad Medical City S/S#8250 with 132kV Network:	486,000.00
PCC Nylon	PCC Nylon 6.6 Petrochemical Conversion Project at Jubail	90,000.00	4400002724	Integration of 380/110kV Madinah Central BSP with 110kV Network, Madinah	102,000.00
MODON Contract	132kV Network Connection for Sudair City S/S - 8515 in Sudair	429,000.00	AL-HADA	Installation of Cable Terminations at 110 kV RANIAH, TURUBA, AL-HADA-2 Substations	1,078,000.00
11031157/00	132kV, XLPE Power Cable for Qassim, -4 (S/S - 9032)	125,000.00	4400002802	Construction of 110 kV Al-Leith S/S OHTL	170,000.00
11031157/00	132kV, XLPE Power Cable for Qassim, -4 (S/S - 9032)	141,000.00	2139	Construction of 110 kV D/C OHTL & U/G Gantry Cable from 380/ 110 kV IHHR-3 BSP to New 110/13.8kV KAEC-S/S in RABIGH	246,000.00
J-IX-424-PF-0	King Abdulaziz International Airport Development Project at Jeddah, Package#01 [U/G Cable Portion]	885,000.00	4400002800	Construction of 110 kV Al-Leith S/S OHTL	170,000.00
4400000581	Construction of BISHA 380/ 132kV BSP	596,500.00	4400001840/00	Construction of 115/13.8kV Al-Muharakkiyyah Substation at Al-Hassa for National Grid of Saudi Arabia	148,800.00
4400002015	Construction of AS-Safa 380/ 132kV BSP #9014 in RIYADH	459,000.00	4400003560	Integration of DOHA 380/230/115kV BSP to the existing 115kV Network	1,968,000.00
4400004549	RAFHA P/P#2, Extension-I:	53,000.00	4400002206	Reinforcement of 132kV Network COA	85,000.00
J-14-426-PF-0	Construction of 110/ 13.8kV Substation - KAIA Package# C [110 kV U/G Cables Portion]	336,000.00	21201049/00	Installation of 110kV Power Cables & FOC at AL-KHANDAQ S/S (Madinah Munawwarah)	86,000.00
J-14-426-PF-0	Construction of 110/ 13.8kV Substation - KAIA Package# C [110 kV U/G Cables Portion]	294,000.00	10331229/00	Installation of 132kV Outdoor/ Indoor Terminations at WADI AL-DAWASIR	154,000.00
Royal Commission C.N.#099-C01	Construction of RIC#1, 380/ 115/ 33 kV BSP in RAS AL KHAIR	500,000.00	MADINAH 110kV Project	Installation of PMJ/ Termination for MADINAH 110kV Project	384,030.00
MODON Contract	132kV Network Connection for Sudair City S/S - 8515 in Sudair	20,000.00	QATIF BSP S/S	QATIF BSP S/S Cable /Termination Work	540,000.00
			QURYYAT	Installation of 132kV 1Ca2000mm2 XLPE Cable Joints, Terminations & Link Boxes @ QURYYAT	216,000.00
			TCJS46	ELASTIMOLD JOINT Training Supervision of TCJS46 for 4 days	65,000.00
			4400005457, 4400005458, 4400005521	1. Construction of New Military City-2 (MC-2) 132/13.8 kV S/S 2. Construction of Jizan City Center 132/13.8kV S/S 3. Integration of 132kV Network to JIZAN BSP (MADAYA in SOA)-S/S Portion NIMAS North 132/33 kV S/S Reinforcement & Integration to the Network	1,179,000.00

LIST OF UNDERGROUND CABLE 380/132/110/34.5/13.8kV PROJECTS



Contract No.	Project/Contract Title and Brief Description of Work	Value (Saudi Riyals)
4800007577	New 110/13.8 kV S/S for Ararah Water Treatment Plant - MAKKAH:	262,000.00
4400006366	Construction of Nariyah North 380/115/33 kV BSP	1,212,000.00
4400006046	Construction of New Dammam North 380/115/13.8 kV BSP	1,008,000.00
4800009987	Construction of QARYAH AL-ULYA-2 115/13.8kV S/S	228,000.00
4800009946	Construction of HAFAR AL-BATIN-6 115/13.8kV S/S	162,000.00
4800002804	Installation of 110kV Cable Accessories at MIU S/S in Madinah	909,500.00
4400004841	Construction of New North East 380/132/33/13.8kV BSP#9053	819,800.00
4400003962	Construction of Al-Jilah 380 kV S/S	692,600.00
4400005712	Extension of SISED 110/13.8kV S/S in TAIF	126,000.00
4400005710	Construction of MUNA-4 110/13.8kV S/S in MAKKAH	204,000.00
4400005711	Construction of AL-WASILIAH 110/13.8kV S/S in TAIF	108,000.00
4400005916	Construction of 132kV Al Mahdiyah OHTL Project	216,000.00
4400005370 4400005297 4400005298	Installation of 110kV Under Ground Cables for 110/13.8kV HINDAWIAH S/S, MAHJAR S/S & MURJAN S/S	1,801,000.00
SEC - WOA	Construction of 110/13.8kV Sea Port-2 S/S in JEDDAH	756,000.00
4400002662	Construction of AL-MOHEIRES 115/13.8kV S/S:	199,440.00
SEC- COA	Installation of 132kV Terminations at WADI AL DAWASIR & SULAYL	160,560.00
SEC- COA	Connection of AL-SAFI S/S No.8305, AL-MATHER S/S No.8233, AL-HAZEM S/S No.8282 with 132kV Network in RIYADH	1,181,000.00
4400007241	Connection of INDUSTRIAL Area S/S#8236 with 132kV Network, Riyadh	108,000.00
4400007119	Connection of AL-NADA S/S#8220 with 132 kV Network in Riyadh	54,000.00
4400007118	Connection of AL-MORABA S/S#8187with 132 kV Network in Riyadh	54,000.00
4400007181	Installation of 132kV Joints & Terminations in Khamis Mushayt & Abha	500,000.00
45000019301	Reinforcement of Darghat 132k/33kV SS8919	92,200.00
4400005140	Construction of AL-WAHA 380/110/33kV BSP in Jeddah Construction of 110/13.8kV Sea port-2 S/S in Jeddah	286,567.00
4400006645	Construction of DUBA#1 Integrated Solar Combined Cycle Power Plant	500,000.00
44000007622	Replacement of 110kV&132kV LPOF Cables in NWOA (Madinah & Tabuk)	1,347,150.00
11031157	132kV, XLPE Power Cable for Qassim,-4 (S/S - 9032)	59,600.00
4400007240	Installation of 132kV Qurtuba Riyadh Metro BSP#9053-8106	39,000.00
4400014462	Replacement of Cable Terminations at Jed:	7,525,754.00
4400015811	Replacement of LPOF Cables in Medina	7,012,000.00



LIST OF TOOLS AND EQUIPMENTS

Tool Type	Capacity	Quantity	Tool Type	Capacity	Quantity
Toolbox	Standard	8	Torque Wrench	Standard	4
Cable Drum /Reel	50 Meter	11	Hydraulic cable cutter		3
Electrical Cable Cutter	1010W	23	Generator	6000W	4
Heating Mat/Blanket		53	Wheel Barrow		1
Aluminum Angle	2 meter	54	Hand Shovel		12
Tightening Belt		30	Aluminum Ladder		2
Lifting Belt		29	Fiber Ladder		3
Chain Block	0.5, 1 ton	35	Sud cable		5
Lever Block	0.5 ton	8	Corex press		1
Pulling Ratchet	0.75-2 ton	18	compressor machine	3HP/8bar	1
LPG Gas Cylinder		4	Magnetic machine		1
Sanding Machine	70-125 dia	8	Light	Portable	10
Air Blower		6	Hard press	Standard	7
Drill Machine	650/800 W	19	Gas detector	Standard	1
Angle Grinder		3	Vacuum cleaner		1
Split/Disc Cutter	2200W	2		Sensitivity: 5 g SF6 / year	1
		15	Dilo TM SF6 leak detector	Inlet pressure:0.2 - 35 bar	1
Cable Stripping Tools			Dilo TM SF6 multiAnalyzer		1
Hydraulic Press Machine	850 bar	10	Dilo TM SF6 Machine compact series	13.5kW ,25A	1
Nitrogen Cylinder		2	PFA hose for Dilo machine with self closing adaptor	12 Meter	7
Heat/Hot Gun		2	SF6 Gas Cylinder		2
Cable Drum Stand	MV/HV Cable	2	Portable fan ventilation	250W	3
Rope 25mm	Standard	2	Stand fan ventilation		1
Steel Mesh		1	Digital Low Resistance Meter	DLRO10	1
Cable Roller	Standard	64	Ground Tester	CA6415	1
Cable Pulling Machine	20,0KN	2	Pipes for fan ventilation	5 Meters	2
Steel wire		2	Gas Mask with Filtration	3M	4
Scaffolding		good	Loader	3 Ton	1
Safety Harness		12	Clamp Meter	Fluke	1
Cable Stand/Jack		2	DC Tester 40KV	Conventional	1
Megger 10KV	10KV	1	Megger 1KV	1KV	2



OUR TEAM

Our team comprises of dedicated project managers, skilled engineers, diligent supervisors, adept jointers, and supportive helpers specializing in MV & HV cable projects. Together, we synergize expertise, precision, and collaboration to deliver exceptional results, ensuring safety and efficiency every step of the way.



CONTACT US



FAISAL ALMEHMADI COMPANY FOR CONTRACTING
APPT#16-B, FLOOR#4, 8312-SUROOH BUSINESS CENTER,
HAIL STREET, AL-BAGHDADIYA AL-GHARBIYA DISTRICT
P.O.BOX 3889, JEDDAH 22231, SAUDI ARABIA

Khawaja Hussam Qadeer
Manager, Business Development & Projects
+966 50 167 1958
high-voltage@almehmadi.com.sa
www.almehmadi.com.sa